



**CMAPSi**

**Installation Guide for  
CMAPSi Version 7.0 onwards**

**Issue Number 2.1**

**February 2006**



# CMAPSi

Thank you for purchasing this product; we hope it will provide many years of reliable and rewarding service.

We would be pleased to hear from you if you have any difficulties, comments or suggestions related to the product, the user documentation or the support service which we offer. Please feel free to contact us by e-mail, postal mail or telephone.

Please also visit our website which is continually being enhanced to offer increased levels of information. You can find us at: <http://www.vitecgroupcomms.com>

**Vitec Group Communications Ltd**  
**7400 Beach Drive**  
**Cambridge Research Park**  
**Cambridgeshire**  
**United Kingdom**  
**CB5 9TP**

General Enquiries: Tel: +44 (0) 01223 815000  
vgc.uk@vitecgroup.com

Versatile  
Communications  
Systems (VCS): Sales: Tel: +44 (0) 1223 815000  
Fax: +44 (0) 1223 815001

Support: Tel: +49 (0) 40 6688 4040 (day)  
Tel: +49 (0) 40 6688 4041 (night)  
Fax: +49 (0) 40 6688 3055 (repairs)

[Drake@avc.de](mailto:Drake@avc.de) (repairs)  
<http://www.avc.de/if/vitec/> (repairs booking)  
[vitec.support@avc.de](mailto:vitec.support@avc.de) (support)



## Policy Statement

Vitec Group Communications has a policy of continuous improvement of both products and documentation and reserves the right to modify product specifications and characteristics without notice, at any time.

Vitec Group Communications has endeavoured to ensure that information, details and descriptions set out in this document are correct at the time of publication. Where alterations have been made to the product, we will endeavour to produce appropriate additional information such as supplementary documents, changes to the website or re-issued copies of a CD ROM.

Vitec Group Communications is, however, unable to guarantee that no changes have taken place to the specification or characteristics of this product after the publication of this document. Vitec Group Communications shall not be liable for any loss or damage whatsoever arising from the use of any information, errors or omissions in this document or any use of the product..

## CE European Union Declaration of Conformity

Vitec Group Communications declares that the electronic equipment has been manufactured in conformity with the following standards:

BS EN 50081-1: 1992	Electromagnetic compatibility. Generic emission standard. Residential, commercial and light industry.
BS EN 50082-1: 1998	Electromagnetic compatibility. Generic immunity standard. Residential, commercial and light industry.
BS EN 60950: 1992	Safety of information technology equipment.

And thereby complies with the requirement of Electromagnetic Compatibility Directive 89/336/EEC and Low Voltage Directive 73/23/EEC as amended by 93/68/EEC.

## Trademarks:

MS-DOS and Windows are registered trademarks of Microsoft Corporation.

Ethernet is a registered trademark of Xerox Corporation.

## Warnings and Cautions

### GENERAL WARNING

Electrical shock can cause severe personal injury or death. All major units of this equipment are powered by mains voltage. Unless specifically advised otherwise, DISCONNECT mains supply before carrying out any maintenance or repair tasks.

Where appropriate, warnings and cautions appear in the text with the following meanings:

**WARNING.** Given where carrying out an instruction can cause risk of injury or death.

**CAUTION.** Given where carrying out an instruction can cause risk of damage to the equipment.

© 2006. All rights reserved. Neither the whole, nor any part of the information contained herein, nor in the products described in this guide, may be adapted or reproduced in any material form except with the prior written approval of Vitec Group Communications.



## Revision History

Issue	Date	Notes
2.0	Oct 2002	Updated to Version 7.0 of the software
2.1	Feb 2006	Updated to incorporate latest additions for 7.0H and revised to new company standard





## Table of Contents

<b>1</b>	<b>INSTALLATION - OVERVIEW .....</b>	<b>13</b>
1.1	Operating system and hardware.....	13
1.2	Installation from CD-ROM .....	13
1.3	Erasure of earlier versions of the software.....	13
1.4	Activation Keys.....	13
1.5	Information required before starting the Installation.....	13
<b>2</b>	<b>INSTALLATION - PROCEDURE.....</b>	<b>14</b>
2.1	Connection Configuration .....	25
2.2	Map Format.....	25
<b>3</b>	<b>INSTALLATION - ADDITIONAL INFORMATION .....</b>	<b>29</b>
3.1	Modifying COM ports in CNETIO.INI .....	29
3.2	Hosts and Services files .....	31
3.2.1	System Test.....	31
3.3	Programmable IP Address Downloading .....	32
3.3.1	IP Address Classes and Network IDs .....	33
3.3.2	Address Classes.....	33
3.3.3	Network IDs .....	33
3.3.4	Node IDs.....	33
3.3.5	Summary .....	34
3.3.6	Drake IP Addresses.....	34
3.4	Installing TCP/IP Software Under Windows 95.....	34
3.4.1	Introduction .....	34
3.4.2	Procedure .....	34
3.4.2.1	Install TCP/IP .....	34
3.5	Installing TCP/IP Software under Windows 98 .....	37
3.6	Installing TCP/IP Software Under Windows NT .....	37
3.6.1	Introduction .....	37
3.6.2	Procedure .....	37
3.6.2.1	Install TCP/IP .....	37
3.7	Installing TCP/IP Software under Windows 2000 and Windows Xp .....	40
3.8	Modifying System Types in the adpmain.ini file.....	40
3.9	Entering the IP address.....	42



## Figures

Figure 2-1	CMAPSi CD Opening Page .....	14
Figure 2-2	CMAPSi Introduction Page .....	15
Figure 2-3	CMAPSi Directory .....	15
Figure 2-4	CMAPSi Software .....	16
Figure 2-5	CMAPSi Setup Wizard.....	16
Figure 2-6	CMAPSi Install .....	17
Figure 2-7	CMAPSi Upgrade .....	17
Figure 2-8	CMAPSi Setup .....	17
Figure 2-9	CMAPSi Install Confirm .....	18
Figure 2-10	CMAPSi Licence Agreement .....	18
Figure 2-11	Customer Information Screen.....	19
Figure 2-12	CMAPSi Installation Folder.....	19
Figure 2-13	CMAPSi Space Check.....	20
Figure 2-14	Confirm Installation .....	20
Figure 2-15	CMAPSi Activation Key .....	21
Figure 2-16	CSUINFO File .....	21
Figure 2-17	CNetio File .....	22
Figure 2-18	Adpmain File .....	22
Figure 2-19	Activation Key Entry.....	23
Figure 2-20	Activation Key Options.....	23
Figure 2-21	CMAPSi Settings .....	24
Figure 2-22	CMAPSi Configuration.....	24
Figure 2-23	Map Conversion.....	25
Figure 2-24	Select Map Files .....	25
Figure 2-25	Update ADM Settings .....	26
Figure 2-26	Select System Type.....	27
Figure 2-27	Installation Complete Screen.....	28
Figure 3-1	Windows 95 TCP/IP.....	34
Figure 3-2	Windows 95 Component Select.....	35
Figure 3-3	Windows 95 Protocol Select.....	35
Figure 3-4	Windows 95 Network .....	36
Figure 3-5	Windows 95 TCP/IP Address .....	36
Figure 3-6	Windows 95 TCP/IP Install Completion.....	37
Figure 3-7	Windows NT4 TCP/IP Install .....	38
Figure 3-8	Windows NT4 Add Protocol.....	38
Figure 3-9	Windows NT4 Add TCP/IP .....	39
Figure 3-10	Windows NT4 IP Address.....	39



# 1 Installation - overview

This section briefly outlines the CMAPSi Installation procedure and details the Installation pre-requirements.

The CMAPSi software is supplied on the CMAPSi CDROM part number STA0533.

## 1.1 Operating system and hardware

CMAPSi requires Windows™ 95 or later, with at least 16MB of hard disk space and 16 MB of RAM.

A COM Port will be required for serial RS232 Communications to the Matrix. COM PORT 1 will be used by default. [If this is already in use it can be modified. See Section 3.1].

A network adapter suitable for connection to an Ethernet network must also be installed on the PC. Please note that CMAPSi may not run on a 100 MBPS network.

## 1.2 Installation from CD-ROM

The installation program (initiated by running **Setup.exe**) MUST be launched from the CMAPSi CD ROM.

## 1.3 Erasure of earlier versions of the software

The security arrangements have been changed with the result that version 6.0n or later will not run correctly if an earlier version is present on the same system. This installation therefore removes any previous version.

## 1.4 Activation Keys

Installation requires an Activation Key to be entered. This is a 20-character (five groups of four) string and is printed on the label attached to the CD ROM. The activation key carries information about the software options that have been purchased. The same CD ROM is used for distributing documents and promotional material and the label will normally display the activation key only if software options have been purchased.

Any key disks used with any pre-6.0n version of CMAPSi will no longer work. An Activation Key has replaced key disks.

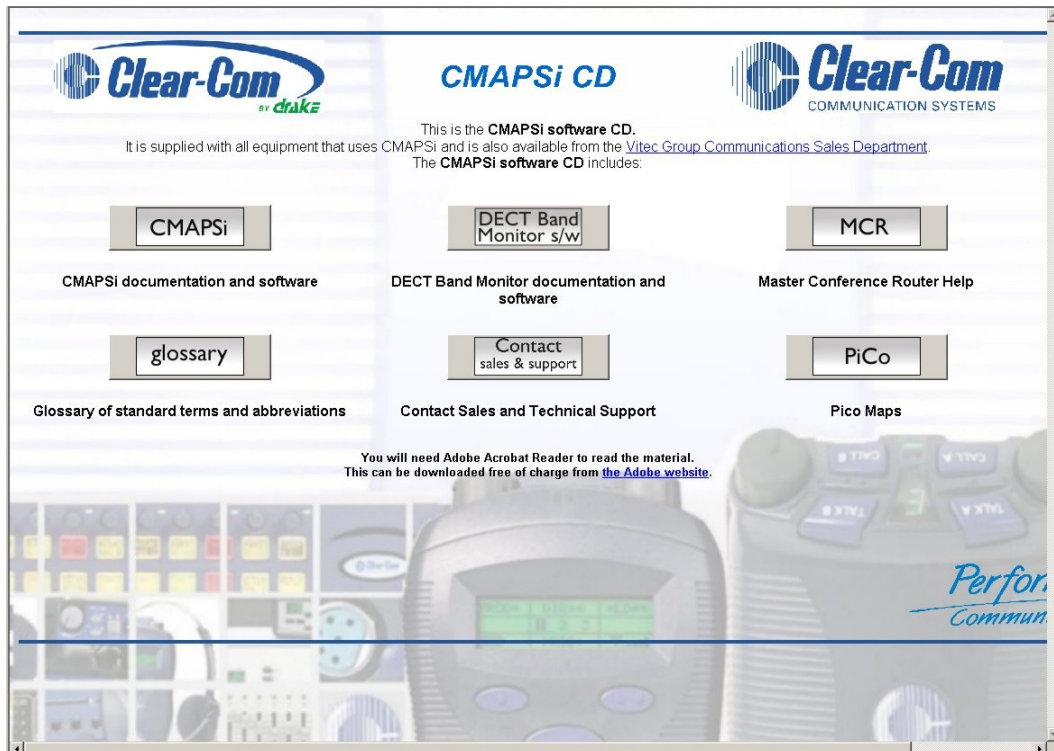
The configuration is intimately connected with the matrix hardware that CMAPSi will control. There are, however, special cases where the PC is not connected to a system, for example, where an activation key has been supplied to operate CMAPSi as a standalone "demo". In such cases, the default values in system-related dialogs can be accepted and the CMAPS demo will still work. ADM will, however, not operate off-line from the matrix.

## 1.5 Information required before starting the Installation

You will need to enter your Activation Key during the installation process, in order to display the options that you have purchased.

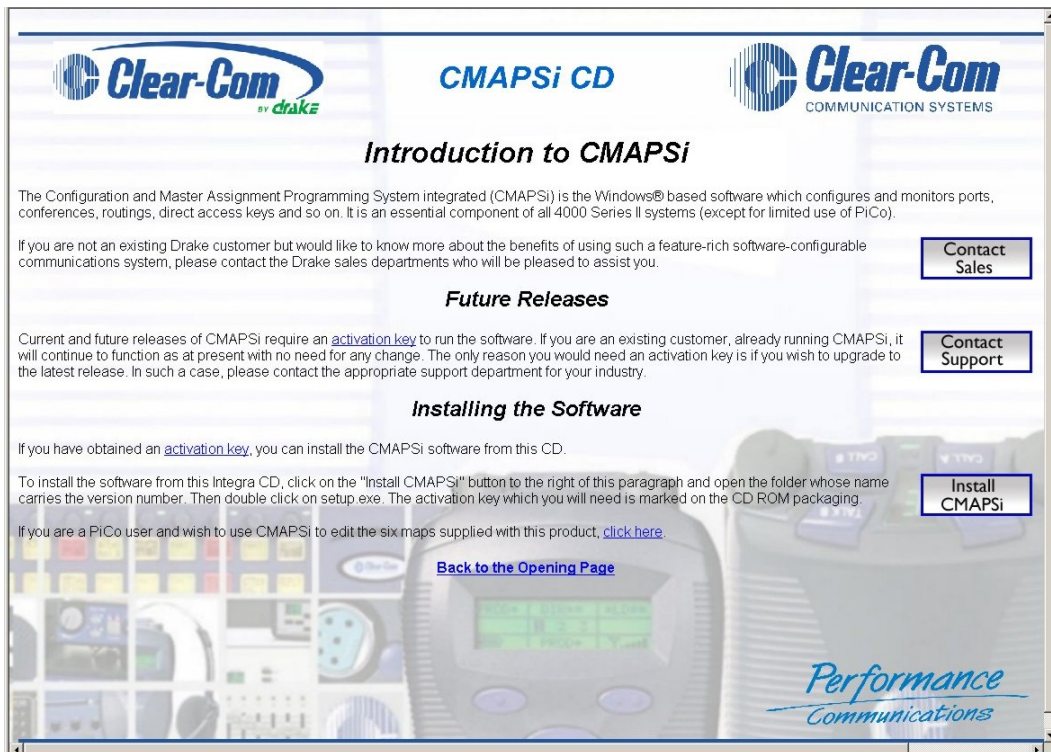
## 2 Installation - procedure

Insert the CMAPSi CDROM in the CDROM drive and allow the CDROM to autorun so that it displays the CMAPSi CDROM opening page.



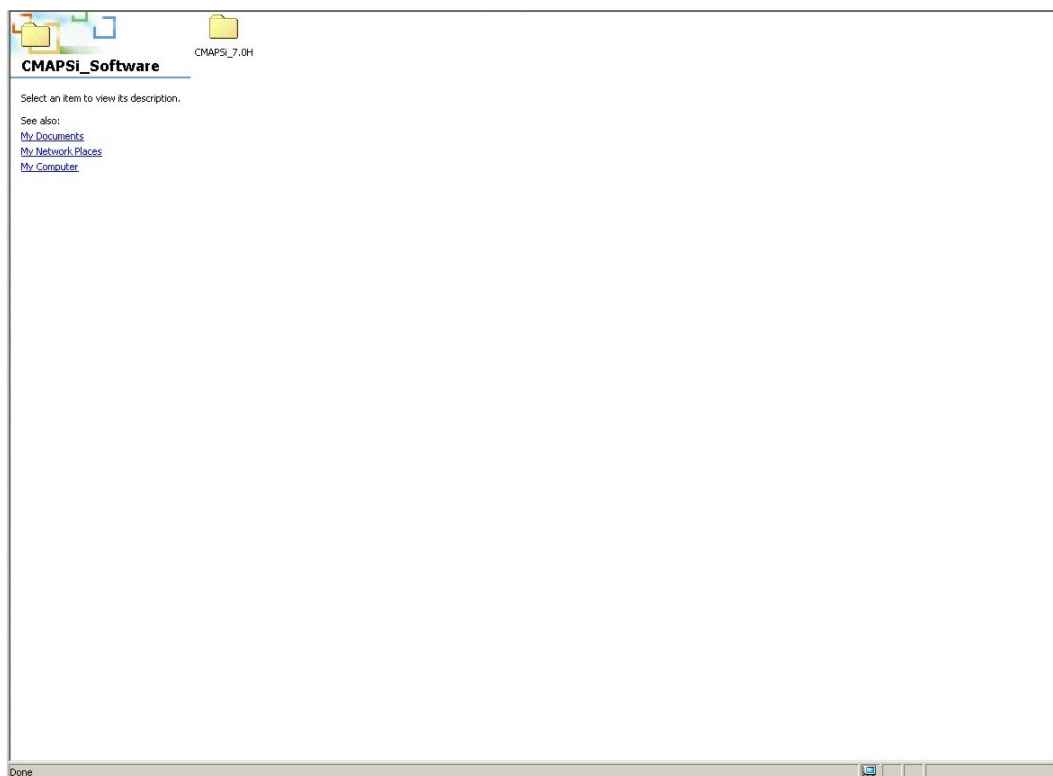
**Figure 2-1 CMAPSi CDROM Opening Page**

At the CMAPSi CDROM opening page, click the 'CMAPSi Software' button to display the 'Introduction to CMAPSi' page.



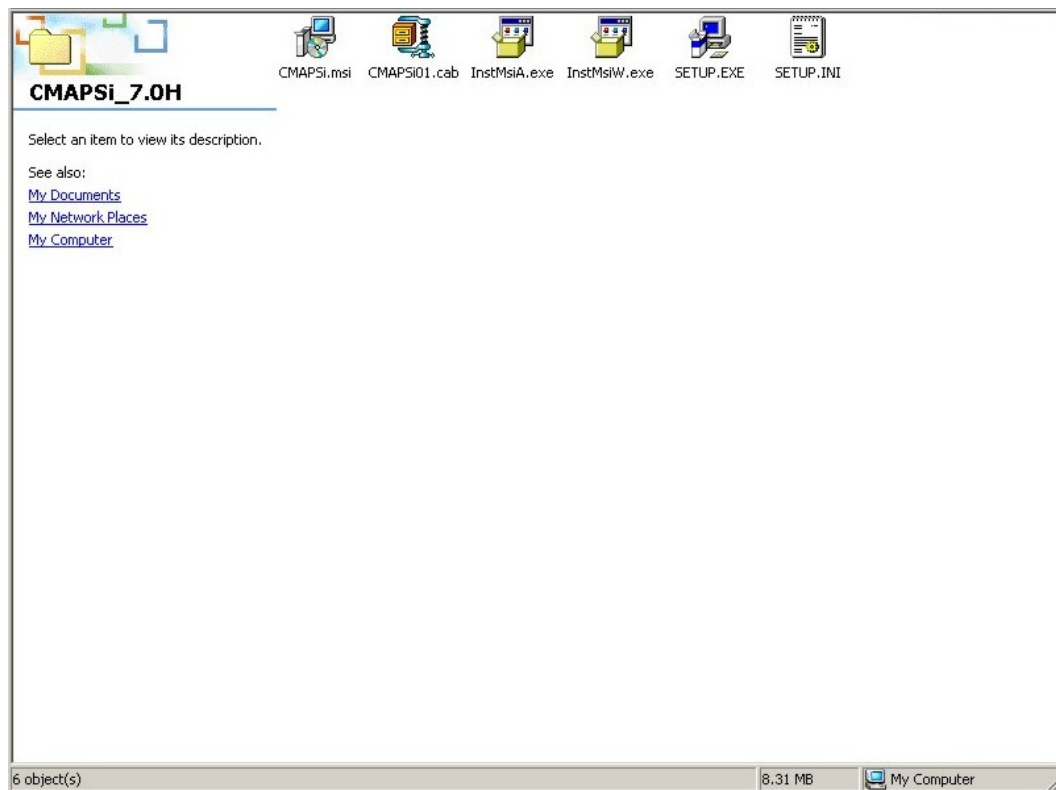
**Figure 2-2 CMAPSi Introduction Page**

Read the section entitled 'Installing the Software' and then click the 'Install CMAPSi' button. The following screen is displayed in Windows Explorer.



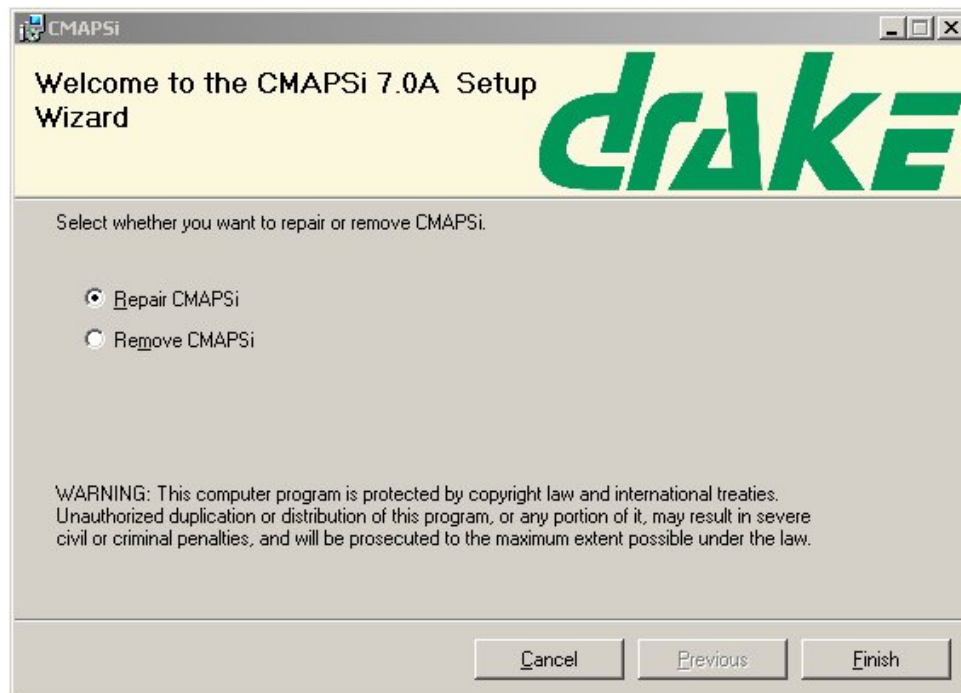
**Figure 2-3 CMAPSi Directory**

Open the CMAPSi folder and then double-click **Setup.exe**.



**Figure 2-4 CMAPSi Software**

If you are overwriting a CMAPSi 7.0A installation, the following screen is displayed.

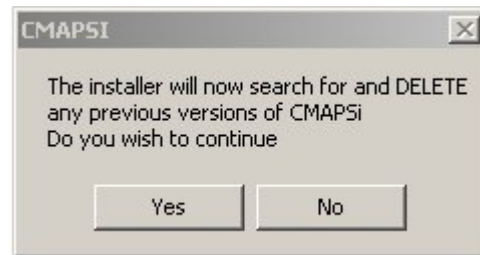


**Figure 2-5 CMAPSi Setup Wizard**



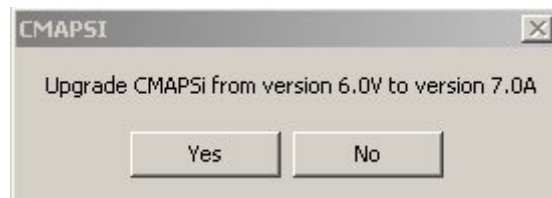
Select 'Remove CMAPSi' to uninstall the existing installation (so that you start from a known baseline) and click 'Finish'.

The following screen is displayed if there is no CMAPSi installation on your PC.



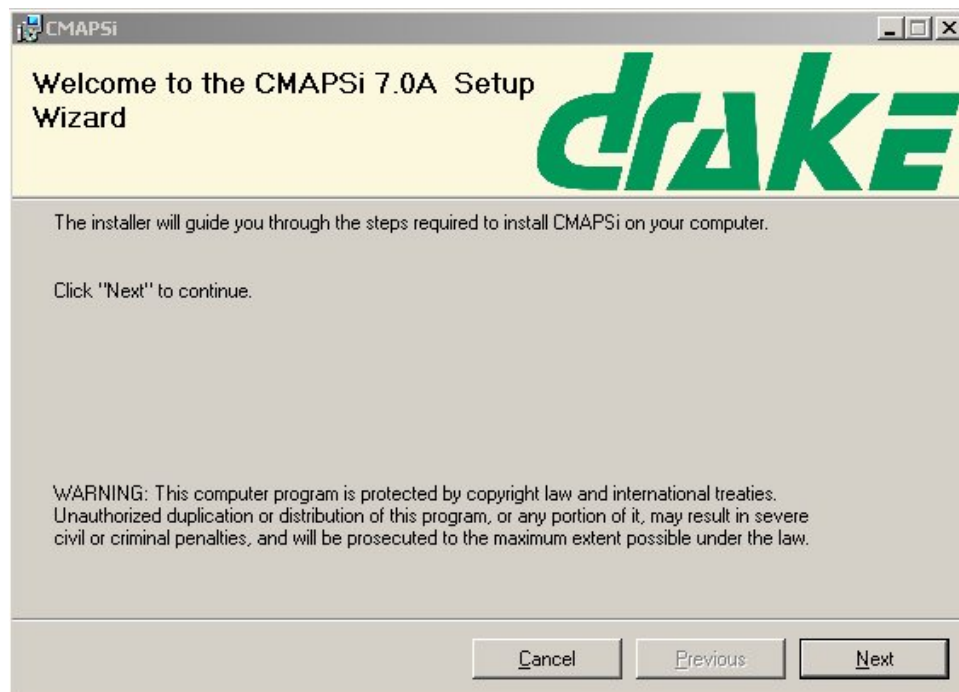
**Figure 2-6 CMAPSi Install**

If you are overwriting a CMAPSi 6.0N or greater installation, an upgrade dialog will be shown.



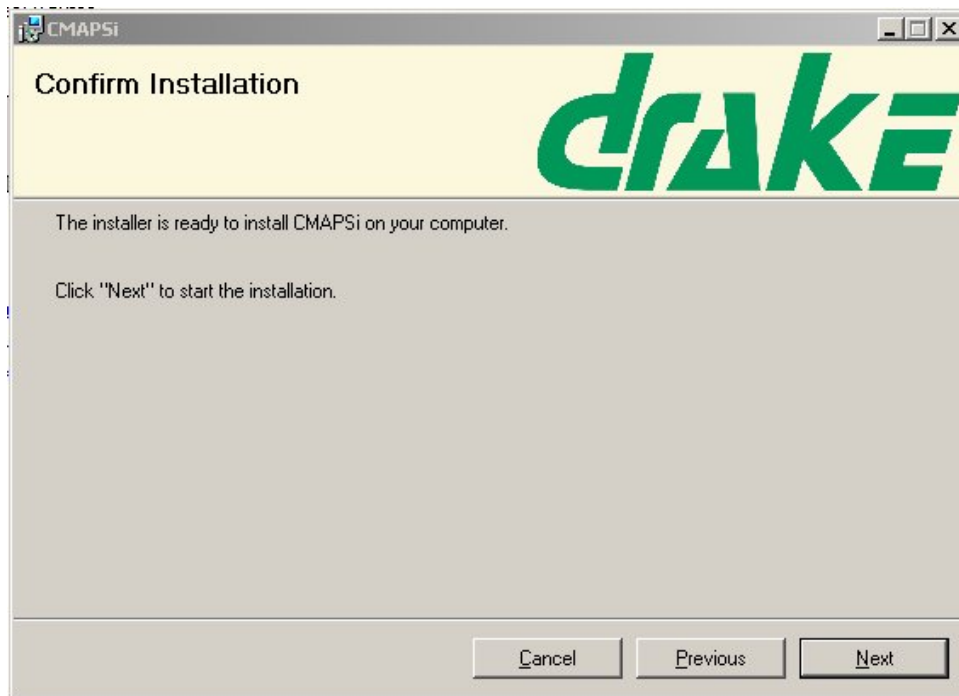
**Figure 2-7 CMAPSi Upgrade**

In either case, click 'Yes' to display the following screen.



**Figure 2-8 CMAPSi Setup**

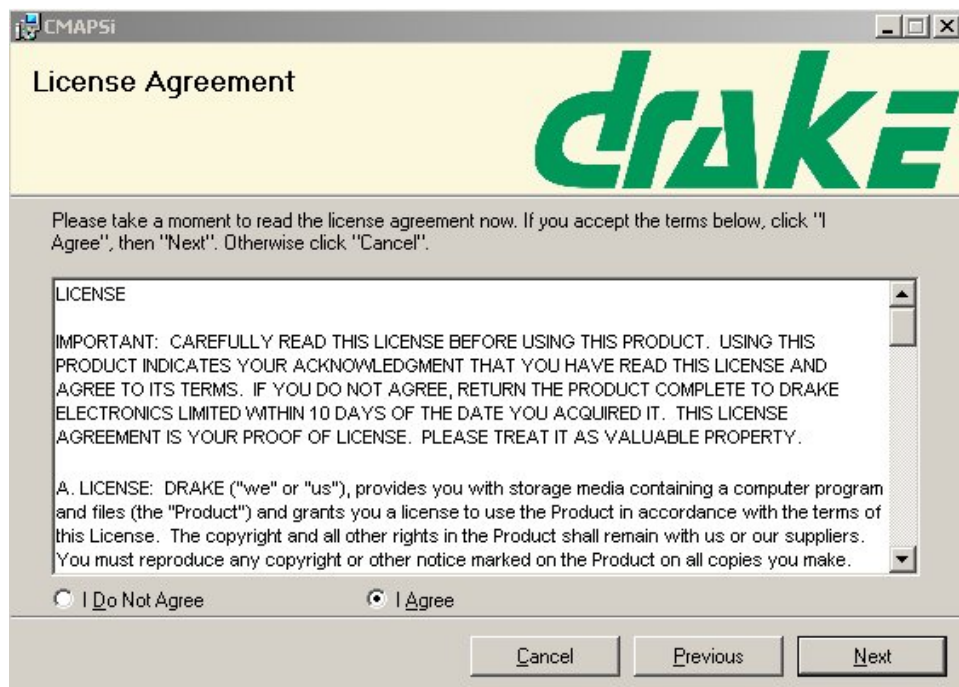
Click 'Next' to display the following screen.



**Figure 2-9 CMAPSi Install Confirm**

Click 'Next' to start the installation.

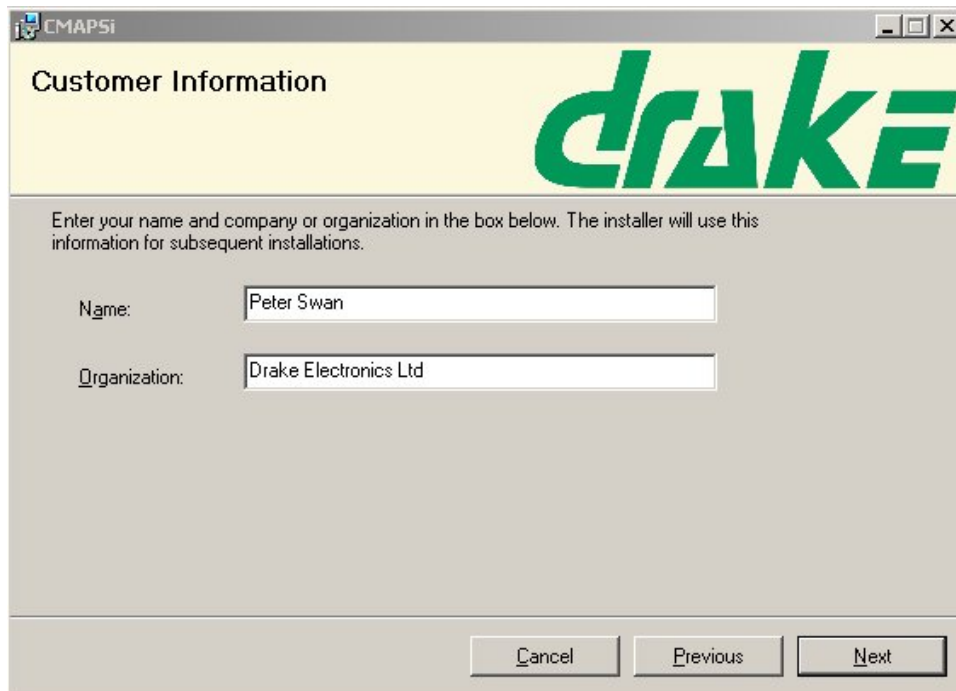
The 'License Agreement' is displayed.



**Figure 2-10 CMAPSi Licence Agreement**

Select 'I Agree' and click 'Next' to proceed. (You must select 'I Agree' otherwise the installation will terminate.)

The 'Customer Information' screen is displayed.



**Customer Information**

Enter your name and company or organization in the box below. The installer will use this information for subsequent installations.

Name:

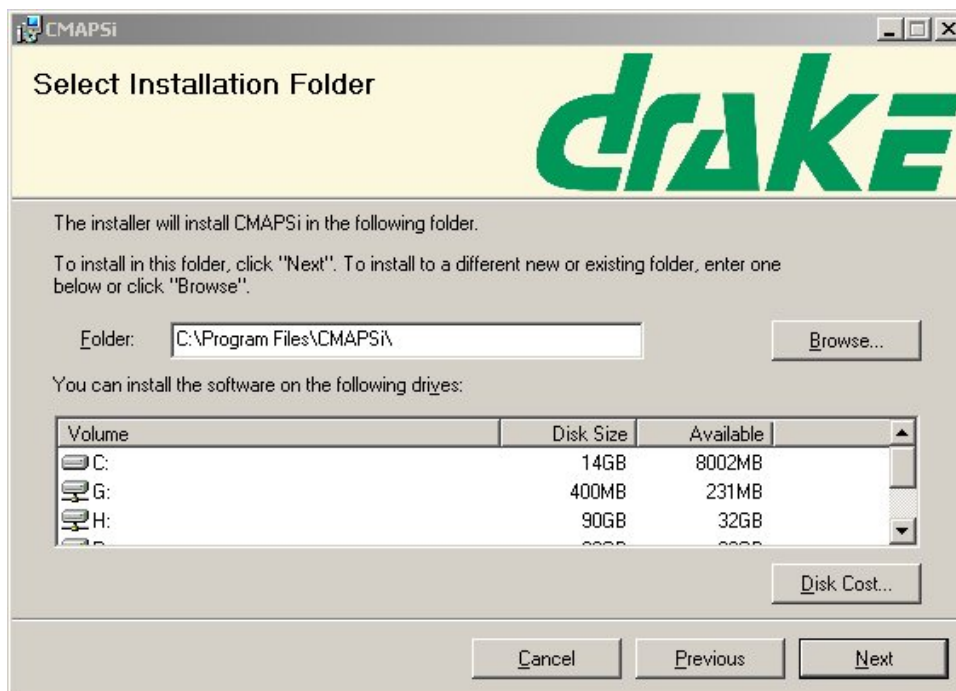
Organization:

Buttons: Cancel, Previous, Next

**Figure 2-11 Customer Information Screen**

Enter the correct details for 'Name' and 'Organization'.

Click 'Next' to display the 'Select Installation Folder' screen.



**Select Installation Folder**

The installer will install CMAPSi in the following folder.

To install in this folder, click "Next". To install to a different new or existing folder, enter one below or click "Browse".

Folder:  Browse...

You can install the software on the following drives:

Volume	Disk Size	Available
C:	14GB	8002MB
G:	400MB	231MB
H:	90GB	32GB

Disk Cost...

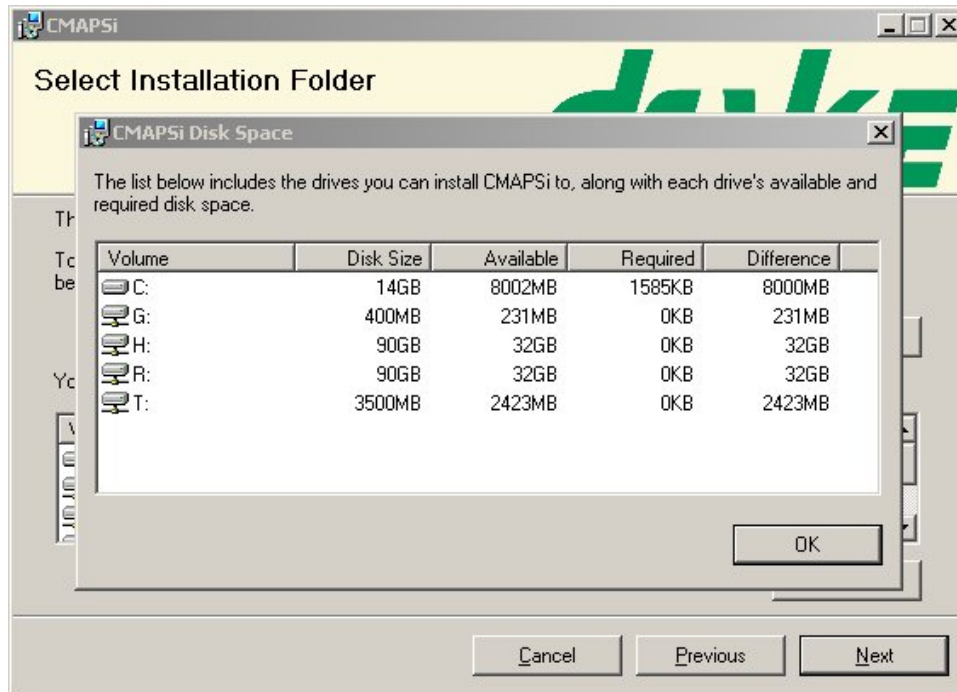
Buttons: Cancel, Previous, Next

**Figure 2-12 CMAPSi Installation Folder**

This screen displays the factory default installation folder. We recommend that you accept the default folder but, if you wish to change it, click 'Browse' and navigate to your preferred folder.

The lower display shows the available disk drives and the amount of disk space available on each.

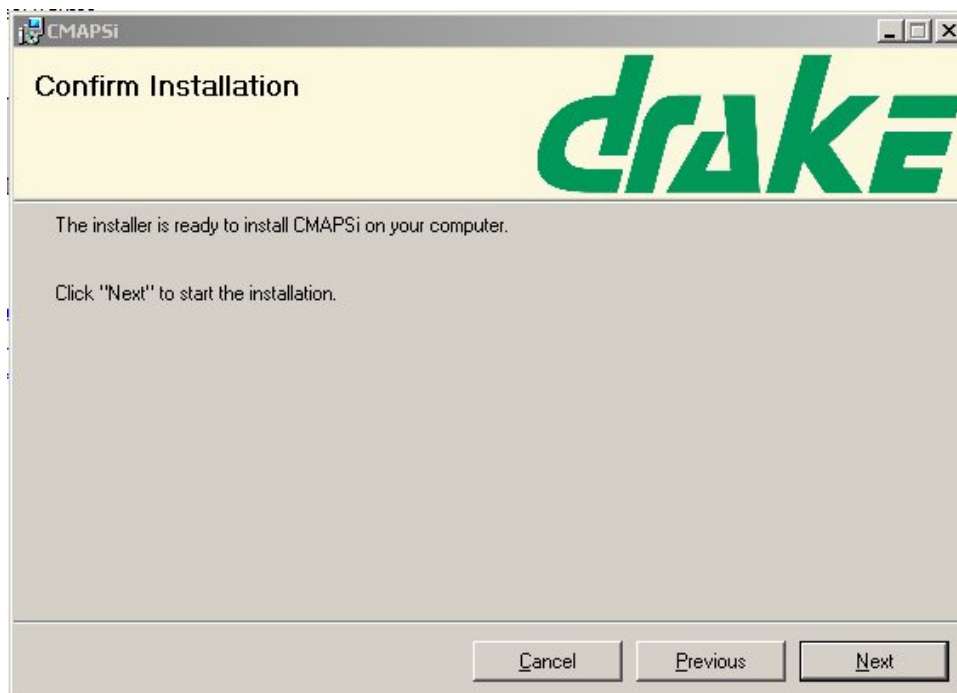
If you want to know how much space will be required for the CMAPSi installation, click the 'Disk Cost' button. A screen similar to the following is displayed.



**Figure 2-13 CMAPSi Space Check**

Click 'OK'.

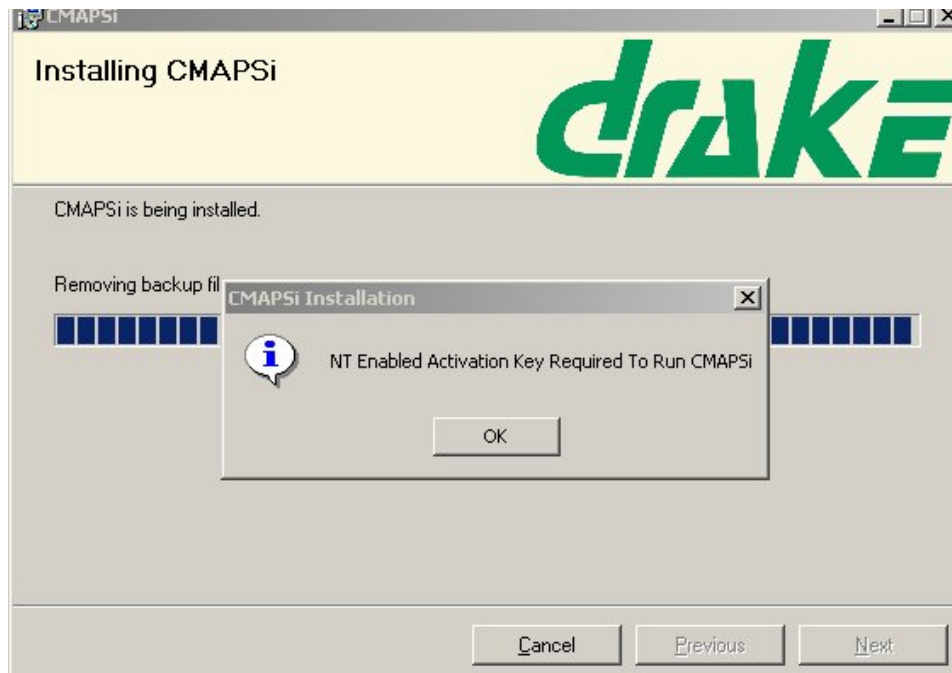
Click 'Next' to display the 'Confirm Installation' screen.



**Figure 2-14 Confirm Installation**

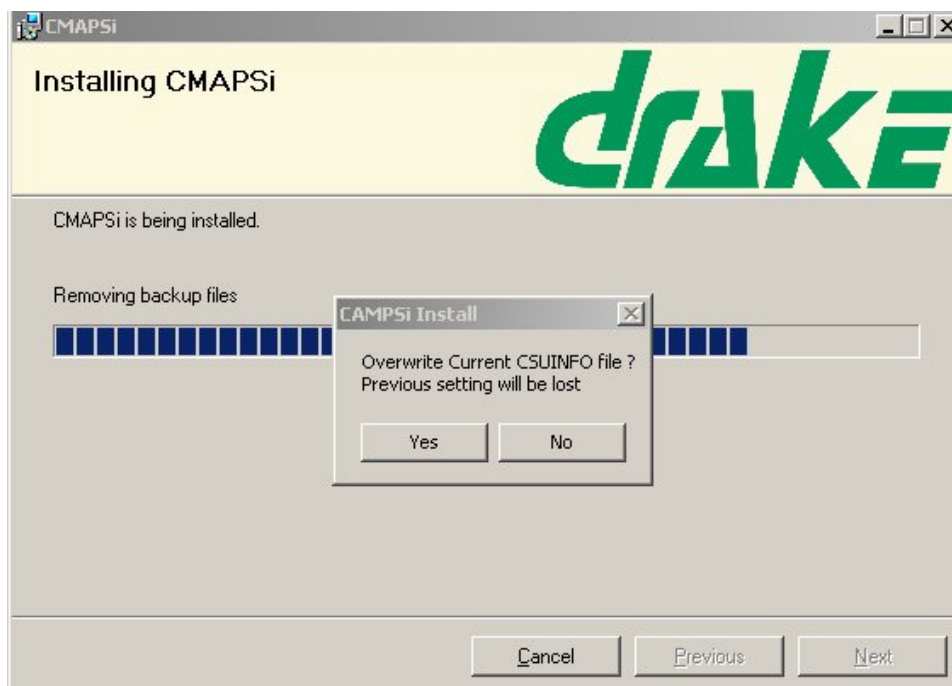
Click 'Next' to start the installation.

If you are installing to Windows NT, 2000 or XP systems, the following sub-screen is displayed. Ensure that you have your 20-digit Activation Key ready and click 'OK'.

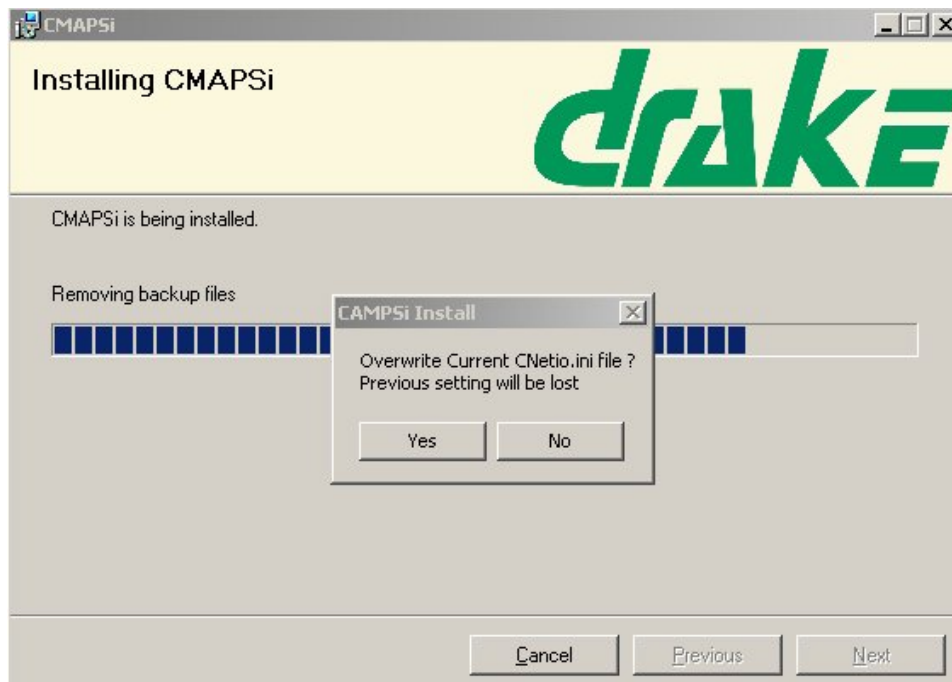


**Figure 2-15 CMAPSi Activation Key**

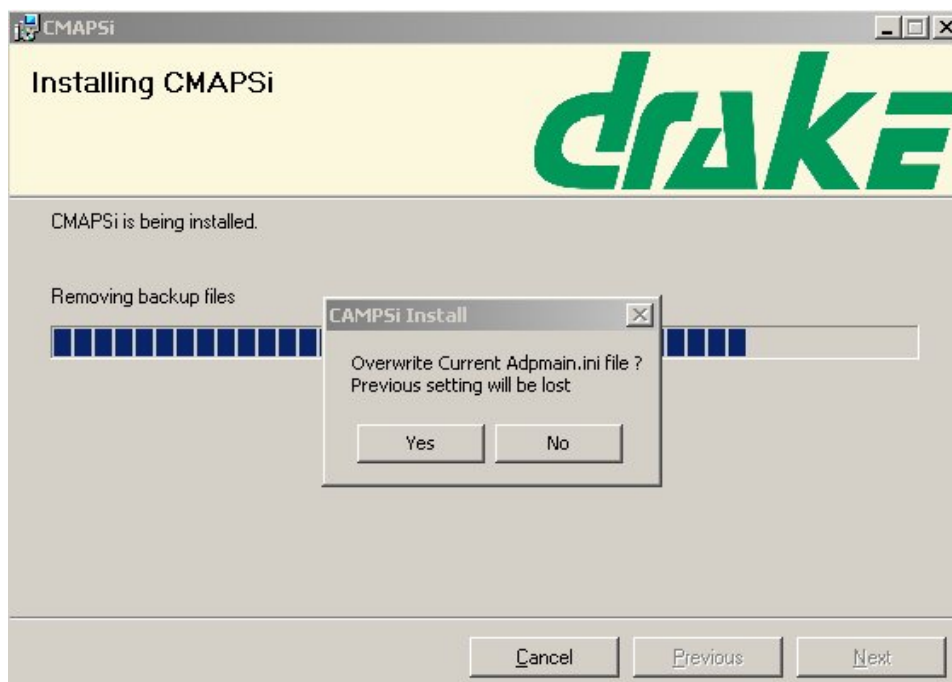
During the remainder of the installation, the following sub-screens are displayed. Click 'Yes' or 'No', as appropriate.



**Figure 2-16 CSUINFO File**



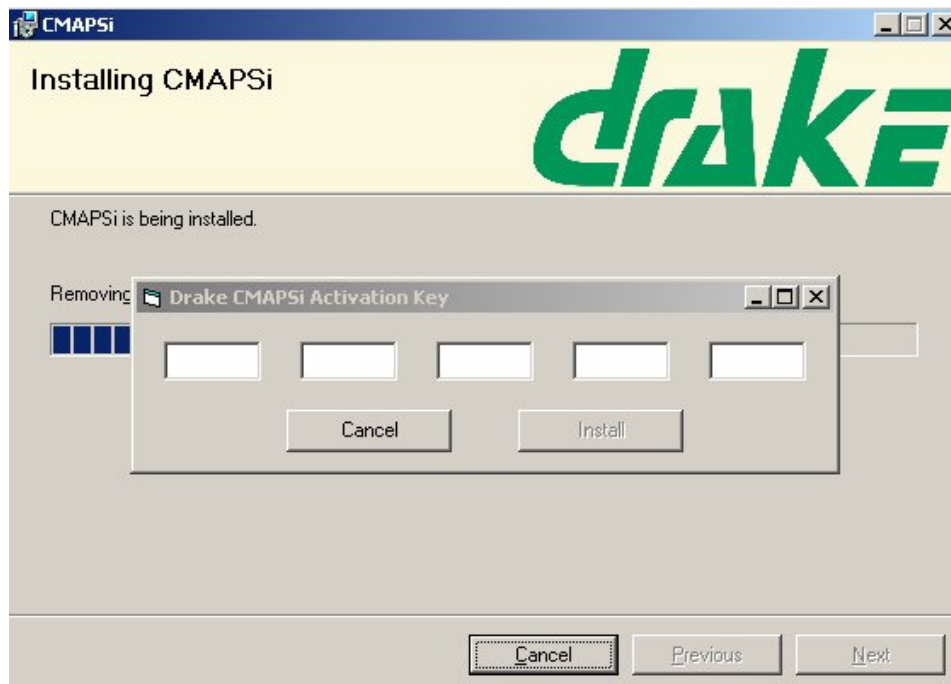
**Figure 2-17 CNetio File**



**Figure 2-18 Adpmain File**

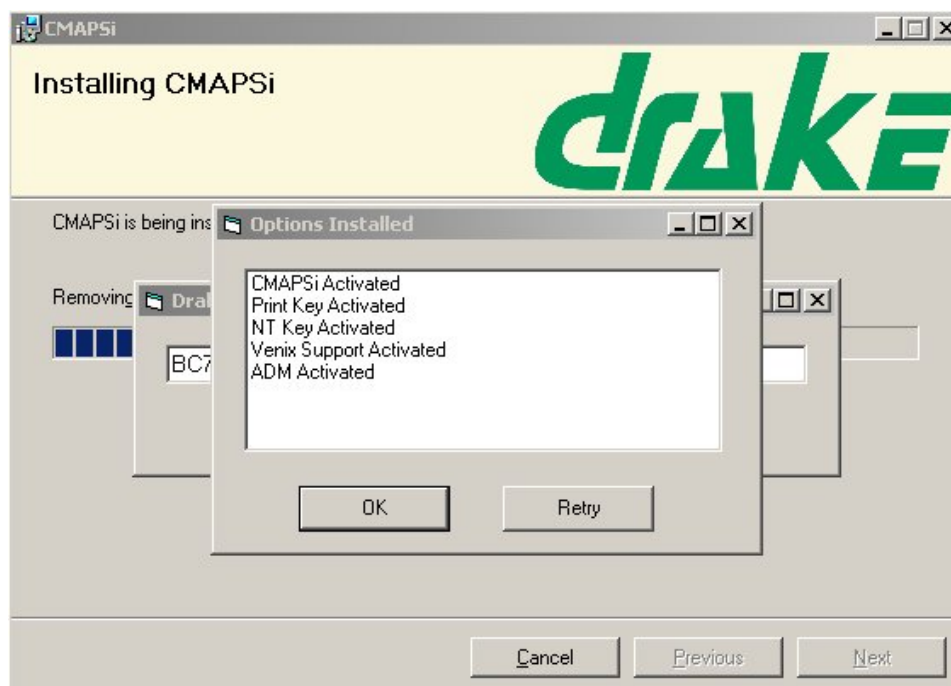
You will now need to enter your Activation Key.





**Figure 2-19 Activation Key Entry**

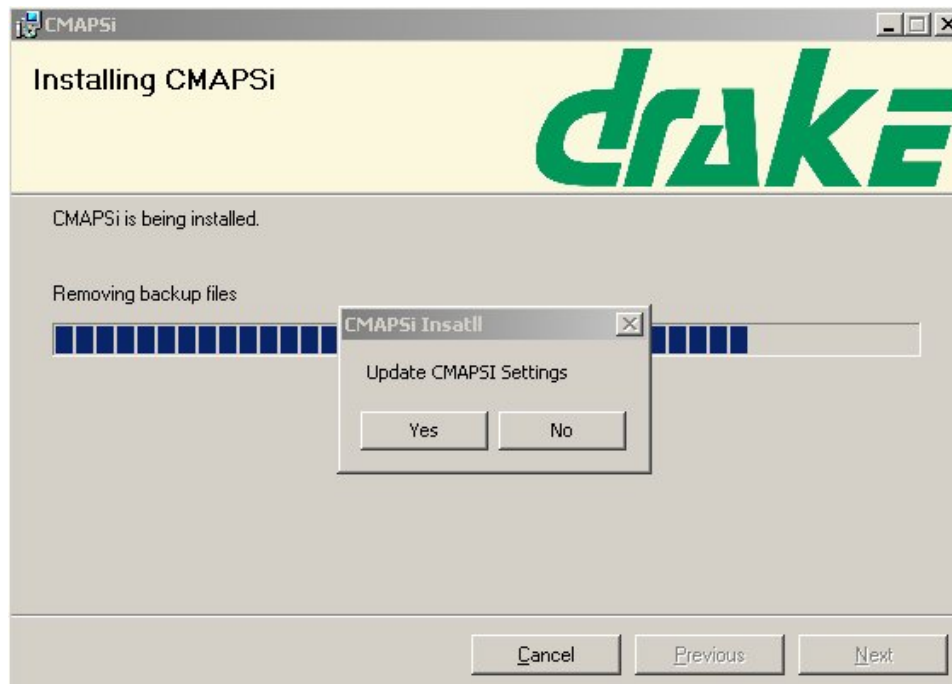
Enter the Activation Key number and click 'Install'. When the activation key has been accepted, the options that you have purchased are displayed. The following illustration represents the full list at the time of publication.



**Figure 2-20 Activation Key Options**

If you feel that all the purchased options are not listed, click 'Retry' and enter the Activation Key again. If, having done so, you feel that other options should have been included, contact Drake Sales Department.

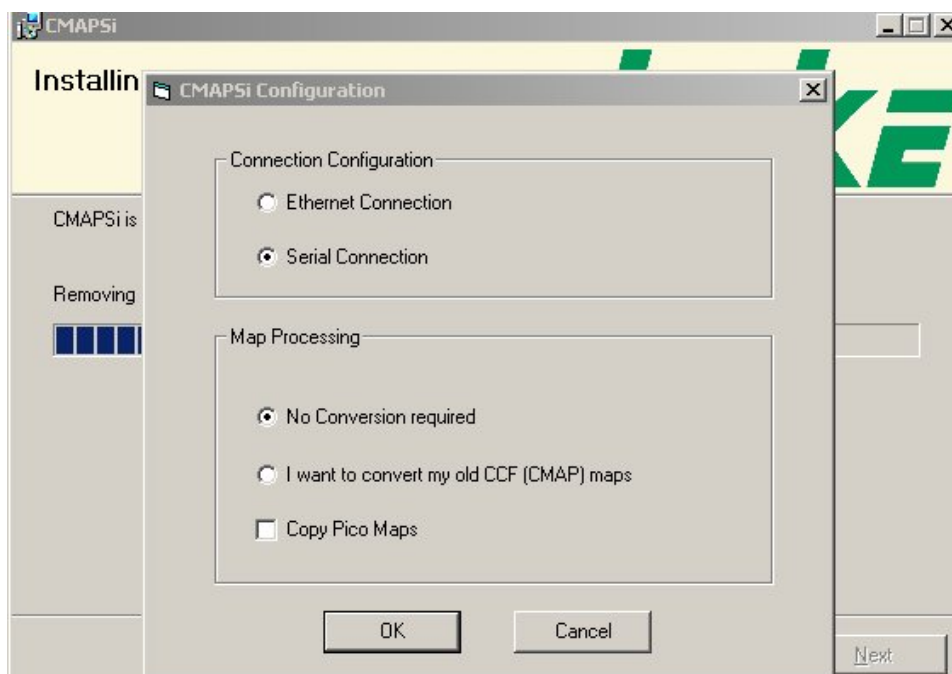
Click 'OK' and then 'Next' to display the 'Update CMAPSi Settings' screen.



**Figure 2-21 CMAPSi Settings**

Click 'Yes' to display the 'CMAPSi Configuration' screen.

The 'CMAPSi Configuration' screen allows you to set up communications and map configurations.



**Figure 2-22 CMAPSi Configuration**



## 2.1 Connection Configuration

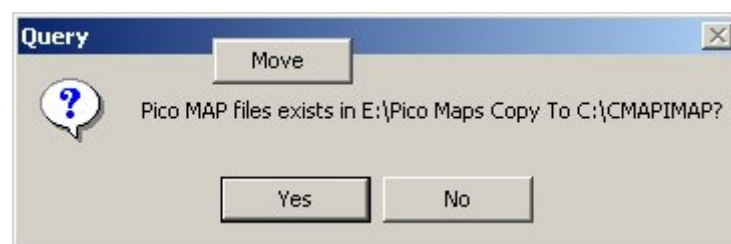
Choose either Ethernet or Serial connections by clicking the relevant radio button. This edits the entry in CNETIO.INI. You will also need to edit CNETIO.INI if your COM port is not equal to 1. This file is in a folder below the location in which you installed CMAPSi (C:\Program Files\CMAPSi by default).

## 2.2 Map Format

The two radio buttons in the Map Processing group offer the option to convert old CCF (CMAP) maps. CCF is an old format long since superseded. All products from 3000 Series onwards use the current CMAPSi format.

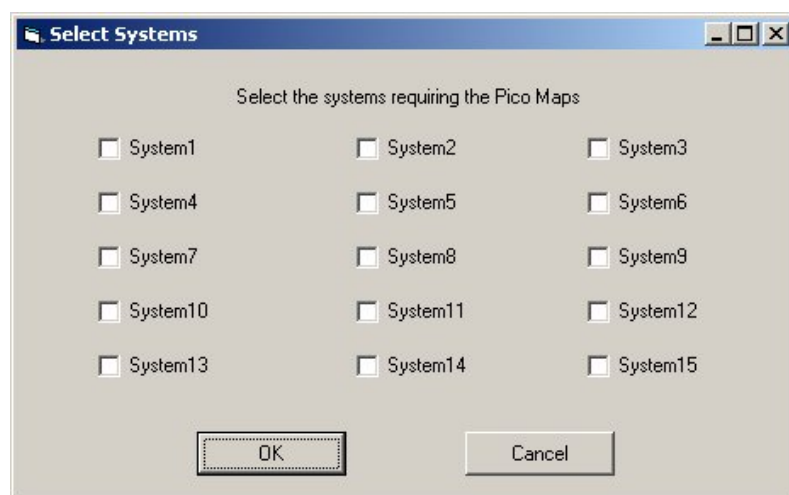
Check 'Copy PiCo maps' to download editable copies of the factory default maps that are pre-loaded into the PiCo matrix. (It has always been possible to operate the 4000 Series II PiCo matrix without needing to purchase CMAPSi. Six maps are supplied already loaded and described as far as practicable in the PiCo Product Manual. If it becomes necessary to edit any of them, however, then CMAPSi and editable copies of the maps are required. Editable copies of the maps are supplied on the Integra CD ROM which is published every month.)

Select the options you require for 'Connection Configuration' and 'Map Processing' and click 'OK' to display the 'ADM Settings' screen. If you elect to copy the PiCo maps, the following dialogue is displayed.



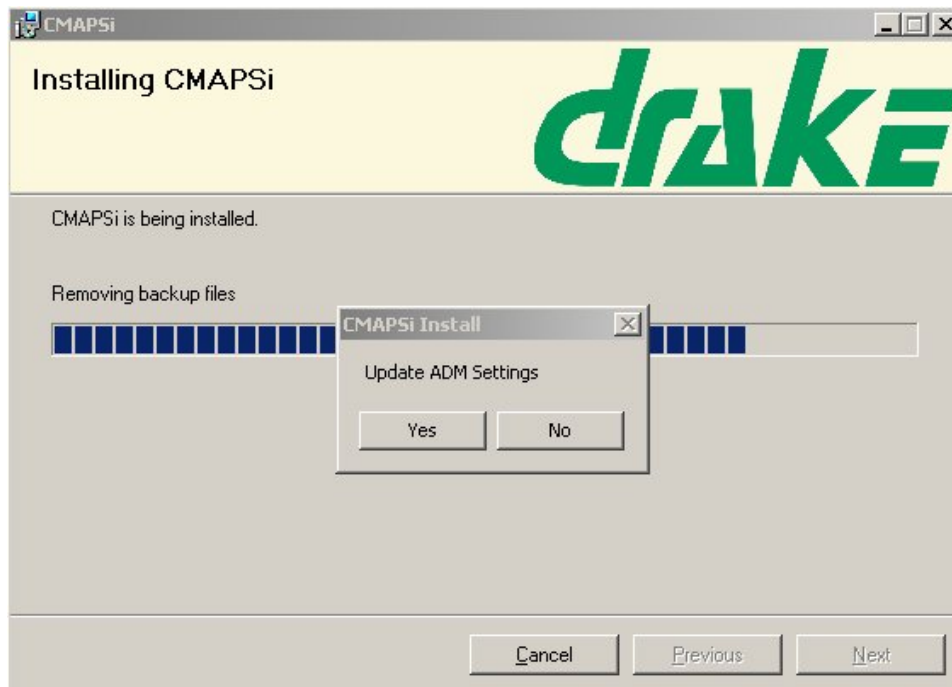
**Figure 2-23 Map Conversion**

Click 'Yes'.



**Figure 2-24 Select Map Files**

Select the System Maps that you want and click 'OK' to display the 'Update Settings Screen'.



**Figure 2-25 Update ADM Settings**

Click 'Yes' to display the 'Select System Type.....' screen

System Type Setup

Select System Type For Each System

Check for multiple frames stacked with first frame from top

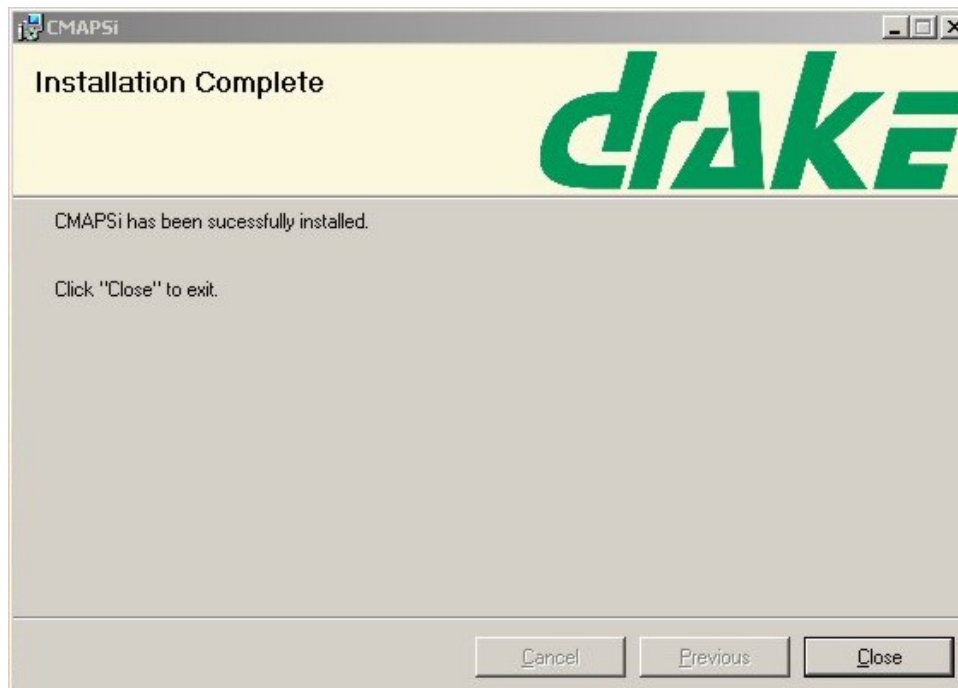
System1 :	4900[9U]	<input checked="" type="radio"/>	3400[4U]	<input type="radio"/>	4400 [4U]	<input type="radio"/>	Pico	<input type="radio"/>	Stack From Top	<input type="checkbox"/>
System2 :	4900[9U]	<input checked="" type="radio"/>	3400[4U]	<input type="radio"/>	4400 [4U]	<input type="radio"/>	Pico	<input type="radio"/>	Stack From Top	<input type="checkbox"/>
System3 :	4900[9U]	<input checked="" type="radio"/>	3400[4U]	<input type="radio"/>	4400 [4U]	<input type="radio"/>	Pico	<input type="radio"/>	Stack From Top	<input type="checkbox"/>
System4 :	4900[9U]	<input checked="" type="radio"/>	3400[4U]	<input type="radio"/>	4400 [4U]	<input type="radio"/>	Pico	<input type="radio"/>	Stack From Top	<input type="checkbox"/>
System5 :	4900[9U]	<input checked="" type="radio"/>	3400[4U]	<input type="radio"/>	4400 [4U]	<input type="radio"/>	Pico	<input type="radio"/>	Stack From Top	<input type="checkbox"/>
System6 :	4900[9U]	<input checked="" type="radio"/>	3400[4U]	<input type="radio"/>	4400 [4U]	<input type="radio"/>	Pico	<input type="radio"/>	Stack From Top	<input type="checkbox"/>
System7 :	4900[9U]	<input checked="" type="radio"/>	3400[4U]	<input type="radio"/>	4400 [4U]	<input type="radio"/>	Pico	<input type="radio"/>	Stack From Top	<input type="checkbox"/>
System8 :	4900[9U]	<input checked="" type="radio"/>	3400[4U]	<input type="radio"/>	4400 [4U]	<input type="radio"/>	Pico	<input type="radio"/>	Stack From Top	<input type="checkbox"/>
System9 :	4900[9U]	<input checked="" type="radio"/>	3400[4U]	<input type="radio"/>	4400 [4U]	<input type="radio"/>	Pico	<input type="radio"/>	Stack From Top	<input type="checkbox"/>
System10 :	4900[9U]	<input checked="" type="radio"/>	3400[4U]	<input type="radio"/>	4400 [4U]	<input type="radio"/>	Pico	<input type="radio"/>	Stack From Top	<input type="checkbox"/>
System11 :	4900[9U]	<input checked="" type="radio"/>	3400[4U]	<input type="radio"/>	4400 [4U]	<input type="radio"/>	Pico	<input type="radio"/>	Stack From Top	<input type="checkbox"/>
System12 :	4900[9U]	<input checked="" type="radio"/>	3400[4U]	<input type="radio"/>	4400 [4U]	<input type="radio"/>	Pico	<input type="radio"/>	Stack From Top	<input type="checkbox"/>
System13 :	4900[9U]	<input checked="" type="radio"/>	3400[4U]	<input type="radio"/>	4400 [4U]	<input type="radio"/>	Pico	<input type="radio"/>	Stack From Top	<input type="checkbox"/>
System14 :	4900[9U]	<input checked="" type="radio"/>	3400[4U]	<input type="radio"/>	4400 [4U]	<input type="radio"/>	Pico	<input type="radio"/>	Stack From Top	<input type="checkbox"/>
System15 :	4900[9U]	<input checked="" type="radio"/>	3400[4U]	<input type="radio"/>	4400 [4U]	<input type="radio"/>	Pico	<input type="radio"/>	Stack From Top	<input type="checkbox"/>

OK

Cancel

**Figure 2-26 Select System Type**

Select the required options for each system and click 'OK' to display the 'Installation Complete' screen.



**Figure 2-27 Installation Complete Screen**

Click 'Close' to finish the installation. CMAPSi is now installed. You can start the application by selecting **Start > Programs > CMAPSi > Cmapsi** or by double-clicking on the desktop icon.

If you are installing to an 'Ethernet Only' system or to a combined Ethernet and Serial system, follow the instructions given in Section 3.2.

Enter the system IP address and subnet mask, in accordance with Section 3.9.

## 3 Installation - additional information

### 3.1 Modifying COM ports in CNETIO.INI

File Location: C:\Program Files\CMAPSi\CNETIO.INI

This INI file sets the COM port for serial connections for both CMAPSi and ADM. Use the table to change the settings in [default] as required.

(E.g. to change the COM port from COM 1 to COM 2, in [default] set PORT=2)

[default]	; Settings used at NetOpen
;DIALCOMMAND="ATDT643100"	
;DIALRESPONSE="CONNECT"	
BAUD=9600	; 300 600 1200 2400 9600 19200
PORT=1	; 1 2 3 4
PARITY=E	; N E O M S
DATABITS=8	; 7 8
STOPBITS=1	; 1 2
RTSFLOW=0	; 0 1
[boot loader]	; Settings used at NetOpen
;DIALCOMMAND="ATDT643100"	
;DIALRESPONSE="CONNECT"	
BAUD=38400	; 300 600 1200 2400 9600 19200
PORT=1	; 1 2 3 4
PARITY=E	; N E O M S
DATABITS=8	; 7 8
STOPBITS=1	; 1 2
RTSFLOW=0	; 0 1
[freespeak]	
BAUD=19200	; Must Be 19200
PORT=1	; 1 2 3 4
PARITY=N	; Must Be N
DATABITS=8	; Must Be 8
STOPBITS=1	; Must Be 1
RTSFLOW=0	; Must Be 0

[System1]	; Settings used at NetConnect
;DIALCOMMAND="ATDT643100"	
;DIALRESPONSE="CONNECT"	
BAUD=9600	; 300 600 1200 2400 9600 19200
PORT=1	; 1 2 3 4
PARITY=E	; N E O M S
DATABITS=8	; 7 8
STOPBITS=1	; 1 2
RTSFLOW=1	; 0 1
[System2]	; Settings used at NetConnect
;DIALCOMMAND="ATDT643100"	
;DIALRESPONSE="CONNECT"	
BAUD=9600	; 300 600 1200 2400 9600 19200
PORT=2	; 1 2 3 4
PARITY=E	; N E O M S
DATABITS=8	; 7 8
STOPBITS=1	; 1 2
RTSFLOW=1	; 0 1
[System3]	; Settings used at NetConnect
;DIALCOMMAND="ATDT643100"	
;DIALRESPONSE="CONNECT"	
BAUD=9600	; 300 600 1200 2400 9600 19200
PORT=2	; 1 2 3 4
PARITY=E	; N E O M S
DATABITS=8	; 7 8
STOPBITS=1	; 1 2
RTSFLOW=1	; 0 1
[Systemetc]	
	; etc

## 3.2 Hosts and Services files

The installation program copies the HOSTS.ADM and SERVICES.ADM files to C:\Windows (Windows 95 and 98), C:\Windows\System32\drivers\etc (Windows XP) or C:\WINNT\System32\drivers\etc (Windows NT4 or Windows 2000) from the CMAPSi CDROM.

The contents of these files must be appended to the Windows HOSTS and SERVICES files respectively. However, if you do not have a copy of these files in the Windows directory you can simply copy HOSTS.ADM to HOSTS (no file suffix) and SERVICES.ADM to SERVICES (no file suffix). The HOSTS file contains the IP address of the PCs and the rack systems on your network. The services file contains information on the protocols and the port numbers used for different services available on the network.

If the IP addresses need to be change from the default addresses supplied, CMAPSi can download the IP address of the matrix. See Section 3.3 for information on downloading IP addresses. Note that it is in the HOSTS file (no file suffix) that the IP addresses must be changed.

Exit and restart Windows for the changes to become effective.

### 3.2.1 System Test

1. Connect the PC to the Matrix via the appropriate Ethernet cable with terminations at each end. Turn off both the 4000 system and the PC.
2. Wait 15 seconds then power on, first the Matrix, then the PC (this is to ensure that the Ethernet Cards power up with the correct configuration data).
3. Test the CMAPSi Ethernet facility by downloading a test map to a 4000 System on the network.
4. Test the ADM Ethernet connection (if purchased) by opening one or more of the Windows, e.g. Message Monitor and Route Monitor and verify that the system actions are recognised.

### 3.3 Programmable IP Address Downloading

The IP addresses are taken from the current HOSTS file, on the download PC, which needs to be edited. It can be found in the 'Windows' directory for Windows 95 and Windows 98. It is in the C:\WINNT\System32\Drivers\etc for Windows NT4, Windows 2000 or Windows XP.

For a particular system nn both the Systemnn and pde6knn entries must be changed to the same value. E.g. for system 4 both the IP addresses for 'System4' and 'pde6k4' must both be changed to the same value. Both sets of addresses are in the same file.

Ensure that the IP addresses of the system and the PC are of the same class (see IP Address Classes below). The IP address of the download PC should be changed as detailed in either Section 3.4 or 3.5, which describe installing TCP/IP software for the appropriate operating system.

The default values are as follows:-

129.67.61.36	System1
129.67.61.37	System2
129.67.61.38	System3
129.67.61.39	System4
129.67.61.40	System5
129.67.61.41	System6
129.67.61.42	System7
129.67.61.43	System8
129.67.61.44	System9
129.67.61.45	System10
129.67.61.46	System11
129.67.61.47	System12
129.67.61.48	System13
129.67.61.49	System14
129.67.61.50	System15

129.67.61.36	pde6k1
129.67.61.37	pde6k2
129.67.61.38	pde6k3
129.67.61.39	pde6k4
129.67.61.40	pde6k5
129.67.61.41	pde6k6
129.67.61.42	pde6k7
129.67.61.43	pde6k8
129.67.61.44	pde6k9
129.67.61.45	pde6k10
129.67.61.46	pde6k11
129.67.61.47	pde6k12
129.67.61.48	pde6k13



129.67.61.49

pde6k14

129.67.61.50

pde6k15

IP addresses are downloaded only during a SERIAL download (not an Ethernet download) and only if the feature has been enabled. The feature is enabled by the following entry in Windows\DCSi.ini (Winnt\DCSi.ini for NT OS) file:

```
[Download Enable]
```

```
IP Addresses=1
```

The feature is disabled by the following entry in Windows\DCSi.ini file

```
[Download Enable]
```

```
IP Addresses=0
```

Or by removing the entry completely

The default condition is that the feature is disabled.

### 3.3.1 IP Address Classes and Network IDs

An IP address is of the form “ppp.qqq.rrr.sss” where a group of up to three digits (for example sss) is known as a number. Each number is decimal in the range 0-255

The IP address signifies three different things:

- The class of the address
- The ID of the network
- The ID of the node

### 3.3.2 Address Classes

There are three classes, namely A, B and C and the class is identified by the range in which the first number (“ppp” in the explanation above) appears. The distinction is:

- A. below 128
- B. from 128 to 191 inclusive
- C. 192 and above

Drake Electronics Ltd supports classes B and C.

### 3.3.3 Network IDs

The network IDs for class B are distinguished by the first two numbers (ppp.qqq) and for class C by the first three numbers (ppp.qqq.rrr).

### 3.3.4 Node IDs

The node in the network is distinguished by the final two numbers (rrr.sss) for class B and by the final number only (sss) for class C.

### 3.3.5 Summary

Class Name	Class Identifier where X is the number "ppp"	Network Identifier	Node Identifier
B	$128 \leq X \leq 191$	ppp.qqq	rrr.sss
C	$X \geq 192$	ppp.qqq.rrr	sss

### 3.3.6 Drake IP Addresses

For a Drake system to operate, all the locations on the network (PCs, matrices and VeNiX units) must all have an address of the same class AND all the nodes must be on the same network. The class can be B or C.

## 3.4 Installing TCP/IP Software Under Windows 95

### 3.4.1 Introduction

This appendix describes the procedure for installing Microsoft TCP/IP protocol software under Windows 95.

**CAUTION:** If your PC is already part of a Networked Environment you should consult your Network Administrator before continuing.

All Drake Equipment must be installed on the same Network. Repeaters may be used to extend Networks.

Contact Drake Technical Support prior to using the equipment on Networks linked with Bridges or Routers.

### 3.4.2 Procedure

#### 3.4.2.1 Install TCP/IP

1. Run the Network Option from the Control Panel within Windows 95.

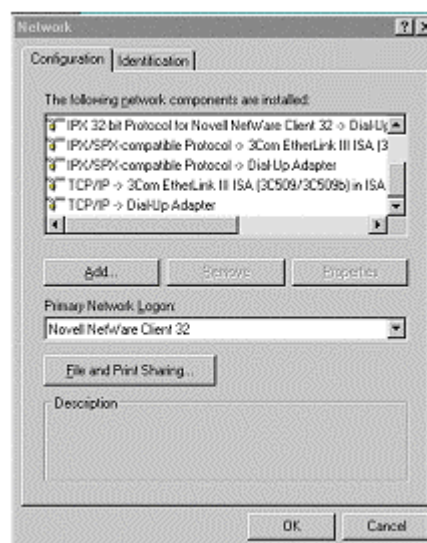
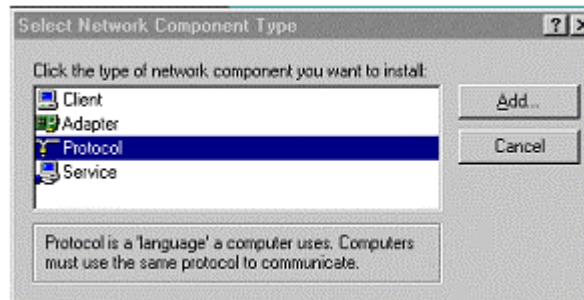


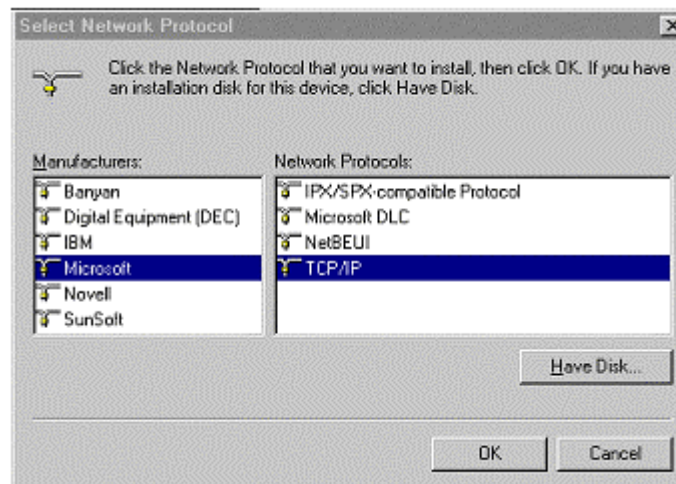
Figure 3-1 Windows 95 TCP/IP

2. Select the Configuration tab and then click on the Add button to continue and a dialogue box similar to that shown below is indicated.
3. In the 'Select Network Component Type' dialogue box shown below select Protocol.



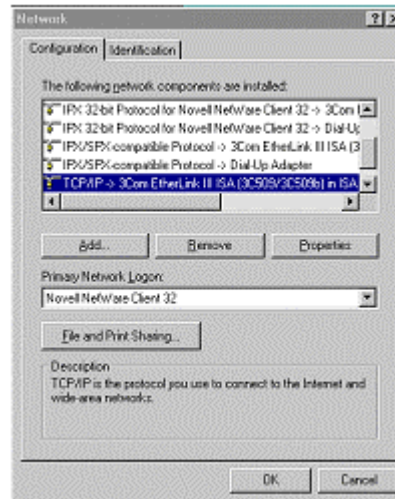
**Figure 3-2 Windows 95 Component Select**

4. Select Add to continue and a dialogue box etc is shown below.
5. In the 'Select Network Protocol' dialogue box, select Microsoft within the 'Manufacturers' list, then select TCP/IP in the 'Network Protocols' list.



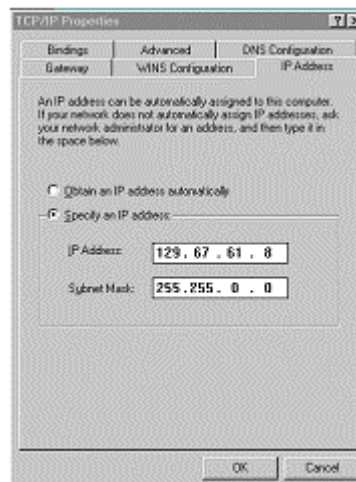
**Figure 3-3 Windows 95 Protocol Select**

6. Select OK. This installs the TCP/IP protocol software onto your PC.
7. In the 'Network' dialogue box, check that the TCP/IP has been added to the network components list.



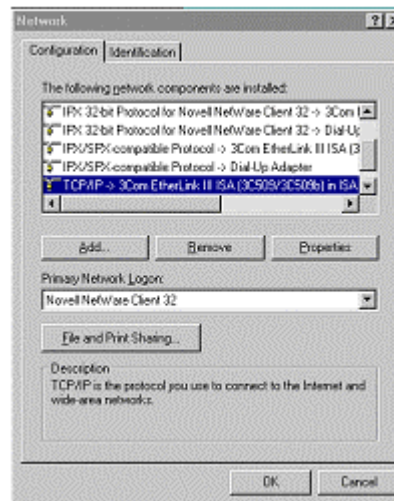
**Figure 3-4 Windows 95 Network**

8. Select Properties, to continue and a box similar to that shown below is displayed.
9. Select the IP Address tab from the 'TCP/IP Properties' dialogue box and enter the IP Address. If you do not know the IP Address consult your Network Administrator.



**Figure 3-5 Windows 95 TCP/IP Address**

10. Click OK to continue and a dialogue box similar to that shown below will be displayed. Select OK to complete this stage of installing TCP/IP.



**Figure 3-6 Windows 95 TCP/IP Install Completion**

DO NOT restart Windows 95.

Now carry out the procedure for editing the hosts and services files described in Section 3.2, if necessary.

## 3.5 Installing TCP/IP Software under Windows 98

The procedure for installing TCP/IP under Windows 98 is similar to the procedure for Windows 95.

## 3.6 Installing TCP/IP Software Under Windows NT

### 3.6.1 Introduction

This appendix describes the procedure for installing Microsoft TCP/IP protocol software under Windows NT4

**CAUTION:** If your PC is already part of a Networked Environment you should consult your Network Administrator before continuing.

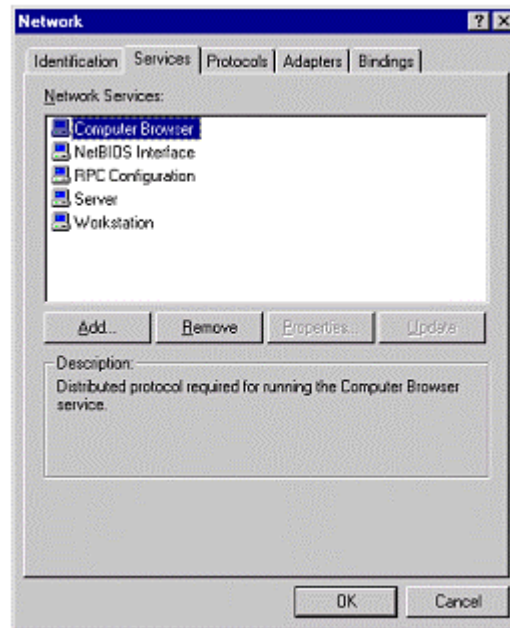
All Drake Equipment must be installed on the same Network. Repeaters may be used to extend Networks.

Contact Drake Technical Support prior to using the equipment on Networks linked with Bridges or Routers.

### 3.6.2 Procedure

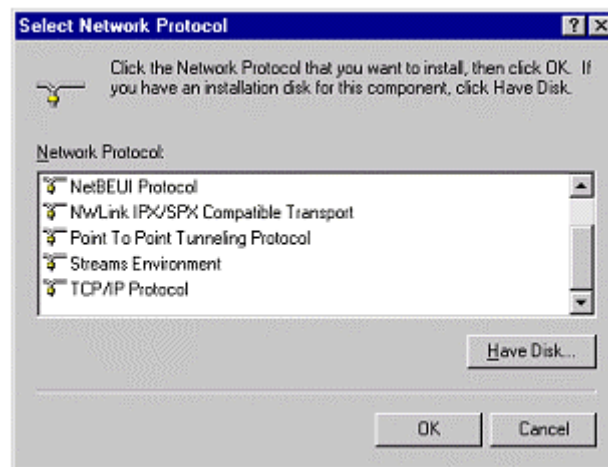
#### 3.6.2.1 Install TCP/IP

1. Run the Network Option from the Control Panel within Windows NT.



**Figure 3-7 Windows NT4 TCP/IP Install**

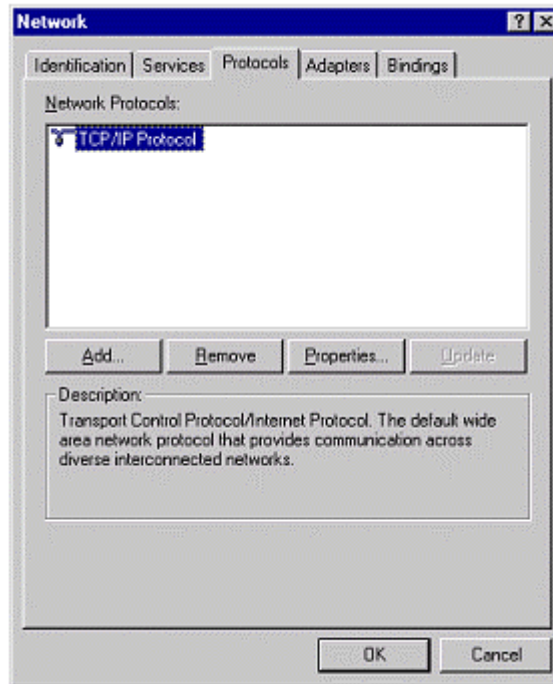
2. Select the Protocols tab and then click on the Add button to continue. A dialogue box similar to that shown below is displayed



**Figure 3-8 Windows NT4 Add Protocol**

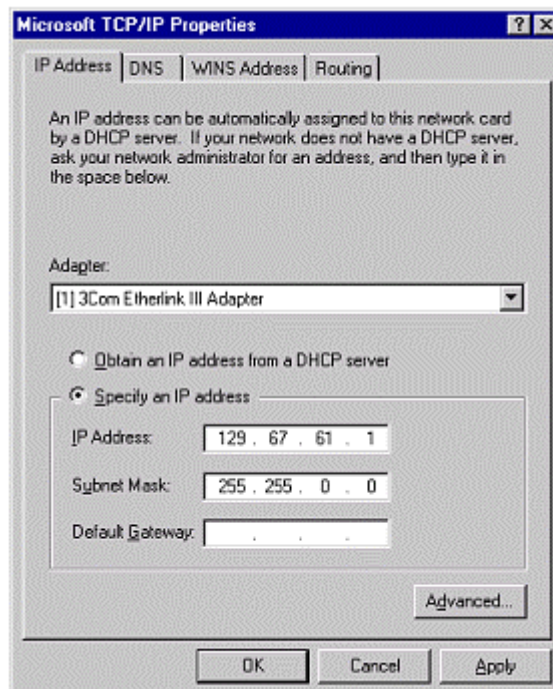
3. In the 'Select Network Protocol' dialogue box, select TCP/IP Protocol within the 'Network Protocols' list.
4. Select OK. This installs the TCP/IP protocol software onto your PC.
5. In the Protocols dialogue box, check that the TCP/IP has been added to the network protocols list.





**Figure 3-9 Windows NT4 Add TCP/IP**

6. Select Properties to continue and a box similar to that shown below is displayed.
7. Select the IP Address tab from the 'TCP/IP Properties' dialogue box and enter the IP Address and Subnet Mask. If you do not know the IP Address consult your Network Administrator.



**Figure 3-10 Windows NT4 IP Address**

8. Click OK to continue and a dialogue box similar to that shown below will be displayed. Select OK to complete this stage of installing TCP/IP.

DO NOT restart Windows.

Now carry out the procedure for editing the hosts and services files described in Section 3.2, if necessary.

## 3.7 Installing TCP/IP Software under Windows 2000 and Windows Xp

The procedure for installing TCP/IP under Windows 2000 and Windows XP is similar to the procedure for Windows NT4.

## 3.8 Modifying System Types in the adpmain.ini file

File Location: C:\Windows\adpmain.ini or C:\WINNT\adpmain.ini

The information contained in this Appendix is part of the default system configuration. You may be advised to make changes by Drake Technical Support personnel. It is not recommended to change any other settings unless specifically advised to do so by Drake Technical Support personnel, details of which should be kept for future reference.

ADPMAIN.INI Settings

[ADPMAIN]	
ConfigPath=C:\CMAPSi\	; set to application install path during installation
Default Layout=	
Close Network Manager=1	; ensure network manager is closed upon exiting the application
[Settings]	
ADMGlobal=0	; set to 1 to enable Global ADM facility
SysInfo=0	; set to 1 to enable ADM SysMessage Information Dialogue
[Download]	
Compression=1	;0 = OFF, 1 = ON
Fast=1	;0 = OFF, 1 = ON
OutputToFile=0	;0 = OFF, 1 = ON
MapLength=1	;0 = 60, 1 = 220
[FrameType]	; these are set by the installation
System1=0	; 0 = 3000/4000 (9U) system
System2=0	; 1 = 6000 system
System3=0	; 2 = 3000/4000 (4U) system
System4=0	
System5=0	
System6=0	
System7=0	
System8=0	
System9=0	
System10=0	
System11=0	



System12=0	
System13=0	
System14=0	
System15=0	
[FrameDirection]	; 0 indicates that multiple frames are stacked from the bottom
	; 1 indicates that multiple frames are stacked from the top
System1=0	
System2=0	
System3=0	
System4=0	
System5=0	
System6=0	
System7=0	
System8=0	
System9=0	
System10=0	
System11=0	
System12=0	
System13=0	
System14=0	
System15=0	
	; ADM Hardware Monitor Venix Unit display
[VenixFrameType]	; 0 indicates no Venix units displayed
System1=0	; 1 indicates 3U Venix Rack ( 11 Venix Units per Venix Rack )
System2=0	; 2 indicates 2U Venix Rack ( 2 Venix Units per Venix Rack )
System3=0	
System4=0	
System5=0	
System6=0	
System7=0	
System8=0	
System9=0	
System10=0	
System11=0	
System12=0	
System13=0	
System14=0	
System15=0	

### 3.9 Entering the IP address

To enter the IP and subnet mask addresses, proceed as follows:

1. Select **Start\Control Panel\Network Connection\LAN or High Speed Internet\Local Area Connection**
2. Select **Internet Protocol**
3. Select **Properties**
4. Enter the following IP Address

129 67 61 1

(where '1' represents the system number for a single system)

#### Caution

**This is the default Drake IP Address. Check with your Network Administrator to ensure that it is the IP Address to be used on your system.**

5. Enter the following subnet mask

255 255 0 0